

DIMENSIONS SHOWN ARE SUBJECT TO CHANGE. PLEASE OBTAIN CERTIFIED PRINTS FROM FIVES NORTH AMERICAN COMBUSTION, INC. IF SPACE LIMITATIONS OR OTHER CONSIDERATIONS MAKE EXACT DIMENSION(S) CRITICAL.

All dimensions are in inches. Dimensions shown apply only to blowers with T-frame motors. Consult Fives North American for dimensions of blowers with other motors.

Blower Designation★	A	B	C	D	E	F	G	H	J	K	L	P	Q	R	S	T‡	U‡	V	Z*	F+K	G+K
2304-11/1-3D	2§	1 ⁵ / ₁₆	10 ⁹ / ₁₆	13 ⁷ / ₁₆	7 ³ / ₁₆	9 ⁹ / ₁₆ §	8 ³ / ₄	5 ⁹ / ₁₆	8 ¹ / ₂	7	2 ³ / ₈	■	—	3/4	3	4	16 ¹¹ / ₁₆	3/4	—	16 ⁹ / ₁₆ §	15 ³ / ₄
2304-44/1-10D	18†	11 ⁵ / ₈	5 ¹ / ₂	32 ¹ / ₁₆	28	42 ⁵ / ₁₆ †	31 ¹ / ₂	18 ⁷ / ₈	34	27 ⁷ / ₁₆	23 ³ / ₄	9 ³ / ₄	17 ⁷ / ₈	1	16	3 ³ / ₄	32 ¹ / ₈	3 ¹ / ₁₆	—	69 ³ / ₄ †	58 ¹⁵ / ₁₆
2308-11/3-T.5D	2§	3 ¹ / ₂	10 ⁹ / ₁₆	15 ⁹ / ₁₆	7 ³ / ₁₆	9 ⁹ / ₁₆ §	8 ³ / ₄	5 ⁹ / ₁₆	8 ¹ / ₂	7	2 ³ / ₈	■	—	3/4	3	4	18 ¹³ / ₁₆	3/4	—	16 ⁹ / ₁₆ §	15 ³ / ₄
2308-14/1-5D	3§	2 ¹ / ₈	6	13 ³ / ₈	10 ³ / ₈	13 ¹ / ₁₆ §	12 ¹ / ₄	8 ³ / ₈	11 ¹ / ₂	10 ⁹ / ₁₆	5 ¹ / ₂	3 ⁵ / ₈	—	3/4	3	4	16 ⁹ / ₁₆	1 ³ / ₁₆	—	23 ⁵ / ₈ §	22 ¹³ / ₁₆
2308-14/1-.75D	3§	2 ¹ / ₈	6	13 ³ / ₈	10 ³ / ₈	13 ¹ / ₁₆ §	12 ¹ / ₄	8 ³ / ₈	11 ¹ / ₂	10 ⁹ / ₁₆	5 ¹ / ₂	3 ⁵ / ₈	—	3/4	3	4	16 ⁹ / ₁₆	1 ³ / ₁₆	—	23 ⁵ / ₈ §	22 ¹³ / ₁₆
2308-14/1-1D	3§	2 ¹ / ₈	6	13 ³ / ₈	10 ³ / ₈	13 ¹ / ₁₆ §	12 ¹ / ₄	8 ³ / ₈	11 ¹ / ₂	10 ⁹ / ₁₆	5 ¹ / ₂	3 ⁵ / ₈	—	3/4	3	4	16 ⁹ / ₁₆	1 ³ / ₁₆	—	23 ⁵ / ₈ §	22 ¹³ / ₁₆
2308-17/1-1D	4§	2 ¹¹ / ₁₆	6	14 ⁵ / ₁₆	11	13 ¹ / ₁₆ §	12 ¹ / ₄	8 ¹ / ₄	11 ¹ / ₂	10 ⁹ / ₁₆	5 ¹ / ₂	4	—	3/4	3	4	17 ¹ / ₂	1 ³ / ₁₆	—	23 ⁵ / ₈ §	22 ¹³ / ₁₆
2308-17/1-1.5D	6§	2 ¹¹ / ₁₆	6	14 ⁵ / ₁₆	12	16 ⁷ / ₈ §	12 ¹ / ₄	8 ¹ / ₄	11 ¹ / ₂	10 ⁹ / ₁₆	5 ¹ / ₂	4	—	3/4	4	4	17 ¹ / ₂	1 ³ / ₁₆	—	27 ⁷ / ₁₆ §	22 ¹³ / ₁₆
2308-24/1-2D	6§	3 ⁷ / ₈	4 ⁷ / ₈	16	13 ¹ / ₈	15 ⁵ / ₁₆ §	13 ³ / ₄	9	13 ¹ / ₂	12 ⁵ / ₁₆	6	5 ¹ / ₄	—	3/4	6	4	18 ¹³ / ₁₆	1 ³ / ₁₆	—	27 ⁵ / ₈ §	26 ¹ / ₁₆
2308-24/1-3D	8†	3 ⁷ / ₈	4 ⁷ / ₈	16	13 ⁵ / ₁₆	19 ¹¹ / ₁₆ †	13 ³ / ₄	9	13 ¹ / ₂	12 ⁵ / ₁₆	6	5 ¹ / ₄	—	3/4	6	4	18 ¹³ / ₁₆	1 ³ / ₁₆	—	32†	26 ¹ / ₁₆
2308-31/1-5D	10†	3 ⁵ / ₁₆	5 ¹ / ₄	17 ³ / ₄	15 ⁵ / ₈	30 ³ / ₈ †	18 ¹ / ₄	10 ¹ / ₄	18	14 ⁷ / ₈	6 ³ / ₈	6 ⁷ / ₈	—	3/4	8	4	20 ¹ / ₄	1 ¹ / ₂	7/8	45 ¹ / ₄ †	33 ¹ / ₈
2308-31/1-7.5D	10†	3 ⁵ / ₁₆	5 ¹ / ₄	17 ³ / ₄	15 ⁵ / ₈	30 ³ / ₈ †	18 ¹ / ₄	10 ¹ / ₄	18	14 ⁷ / ₈	6 ³ / ₈	6 ⁷ / ₈	—	3/4	8	4	20 ¹ / ₄	1 ¹ / ₂	—	45 ¹ / ₄ †	33 ¹ / ₈
2308-31/1-7.5D	10†	3 ⁵ / ₁₆	7 ³ / ₄	20 ¹ / ₄	15 ⁵ / ₈	30 ³ / ₈ †	18 ¹ / ₄	10 ¹ / ₄	18	14 ⁷ / ₈	7	6 ⁷ / ₈	—	3/4	8	4	22 ³ / ₄	1 ¹ / ₂	7/8	45 ¹ / ₄ †	33 ¹ / ₈
2308-21/1-10D	12†	3 ¹⁵ / ₁₆	5 ³ / ₄	21 ⁵ / ₁₆	20 ⁵ / ₈	38 ⁷ / ₁₆ †	25 ¹ / ₂	13 ⁷ / ₈	25	19 ³ / ₄	7 ¹ / ₄	8 ⁹ / ₁₆	—	3/4	10	4	23 ¹ / ₁₆	2 ¹ / ₄	2 ¹ / ₄	58 ³ / ₁₆ †	45 ¹ / ₄
2308-44/1-10D	16†	11 ¹ / ₂	5 ¹ / ₂	31 ¹⁵ / ₁₆	28	45 ⁷ / ₁₆ †	31 ¹ / ₂	18 ⁷ / ₈	34	27 ⁷ / ₁₆	23 ³ / ₄	9 ³ / ₄	17 ⁷ / ₈	1	16	3 ³ / ₄	32	3 ¹ / ₁₆	—	72 ⁷ / ₈ †	58 ¹⁵ / ₁₆
2308-44/1-15D	16†	11 ¹ / ₂	5 ¹ / ₂	31 ¹⁵ / ₁₆	28	45 ⁷ / ₁₆ †	31 ¹ / ₂	18 ⁷ / ₈	34	27 ⁷ / ₁₆	23 ³ / ₄	9 ³ / ₄	17 ⁷ / ₈	1	16	3 ³ / ₄	32	3 ¹ / ₁₆	—	72 ⁷ / ₈ †	58 ¹⁵ / ₁₆
2308-44/1-20D	18†	11 ¹ / ₂	5 ¹ / ₂	31 ¹⁵ / ₁₆	28	45 ⁷ / ₁₆ †	31 ¹ / ₂	18 ⁷ / ₈	34	27 ⁷ / ₁₆	23 ³ / ₄	9 ³ / ₄	17 ⁷ / ₈	1	16	3 ³ / ₄	32	3 ¹ / ₁₆	1 ¹ / ₂	72 ⁷ / ₈ †	58 ¹⁵ / ₁₆
2308-44/1-25D	18†	11 ¹ / ₂	7 ¹ / ₂	33 ¹⁵ / ₁₆	28	45 ⁷ / ₁₆ †	31 ¹ / ₂	18 ⁷ / ₈	34	27 ⁷ / ₁₆	23 ³ / ₄	9 ³ / ₄	17 ⁷ / ₈	1	16	3 ³ / ₄	32	3 ¹ / ₁₆	—	72 ⁷ / ₈ †	58 ¹⁵ / ₁₆
2308-44/1-30D	18†	11 ¹ / ₂	7 ¹ / ₂	33 ¹⁵ / ₁₆	28	45 ⁷ / ₁₆ †	31 ¹ / ₂	18 ⁷ / ₈	34	27 ⁷ / ₁₆	23 ³ / ₄	9 ³ / ₄	17 ⁷ / ₈	1	16	3 ³ / ₄	32	3 ¹ / ₁₆	2 ¹ / ₂	72 ⁷ / ₈ †	58 ¹⁵ / ₁₆
2308-47/1-40D	24†	12 ³ / ₈	8	39 ³ / ₁₆	33 ¹ / ₂	54 ⁷ / ₁₆ †	35	20 ¹ / ₂	38	31 ³ / ₁₆	26 ⁷ / ₈	13	22 ³ / ₄	1	24	6	40 ⁷ / ₈	4 ⁵ / ₁₆	1/2	85 ⁵ / ₈ †	66 ³ / ₁₆
2308-47/1-50D	24†	12 ³ / ₈	8	39 ³ / ₁₆	33 ¹ / ₂	54 ⁷ / ₁₆ †	35	20 ¹ / ₂	38	31 ³ / ₁₆	26 ⁷ / ₈	13	22 ³ / ₄	1	24	6	40 ⁷ / ₈	4 ⁵ / ₁₆	2	85 ⁵ / ₈ †	66 ³ / ₁₆

★ Explanation of designation: 2304-11/1-3D means Series 2300, 4 psi pressure, inner housing no. 11, 1 stage, 1/3 hp motor, direct drive.

‡ With drip-proof motor, if dimensions are different from TEFC. † With TEFC motor, if dimensions are different from drip-proof.

* Z = Motor overhang for TEFC motors. There is no overhang for drip-proof motors, except 2320-33/1-40D and 2324-33/1-40D which overhang 1/2".

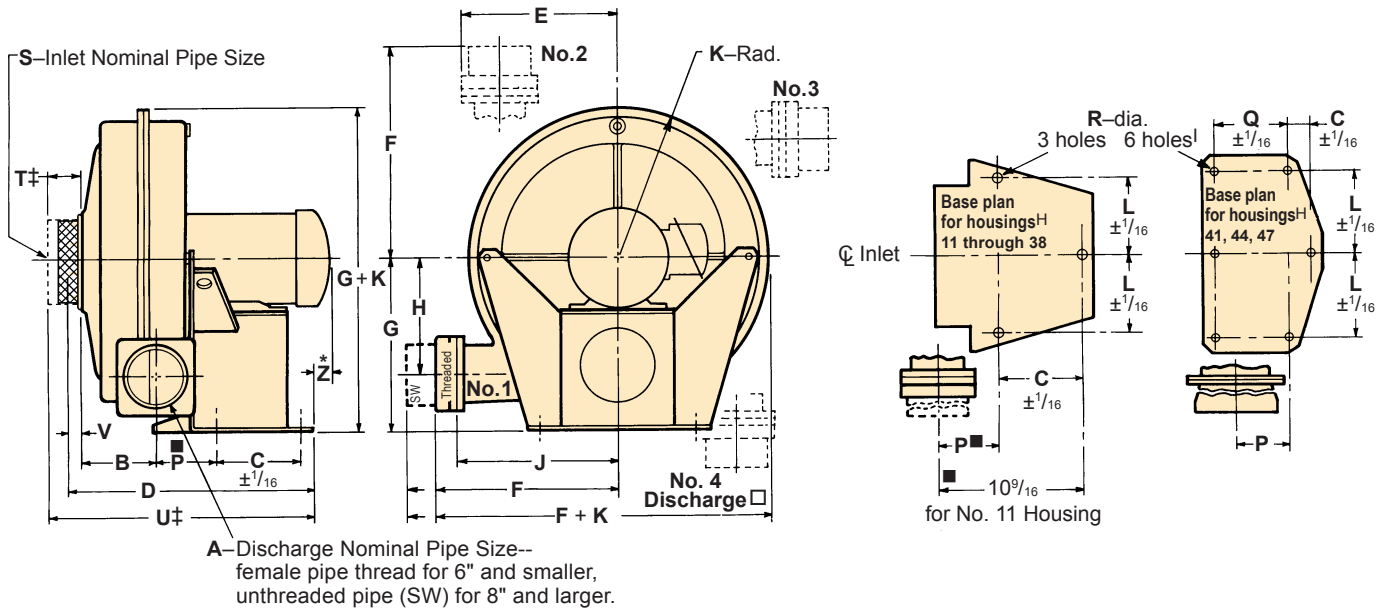
‡ Listed T and U dimensions are for SW inlet. For threaded inlet where S = 3", T = 1³/₄"; S = 4", T = 1⁷/₈"; S = 6", T = 5". If S is greater than 6", threaded inlet is not available.

† SW discharge (unthreaded pipe) is included in F. ■ Discharge C is 10⁹/₁₆" from farthest base hole, for inner housing no. 11.

§ Female pipe thread. If SW discharge (unthreaded pipe) is specified, add 3¹/₄" to F.

□ 5 holes when No. 4 discharge is furnished.

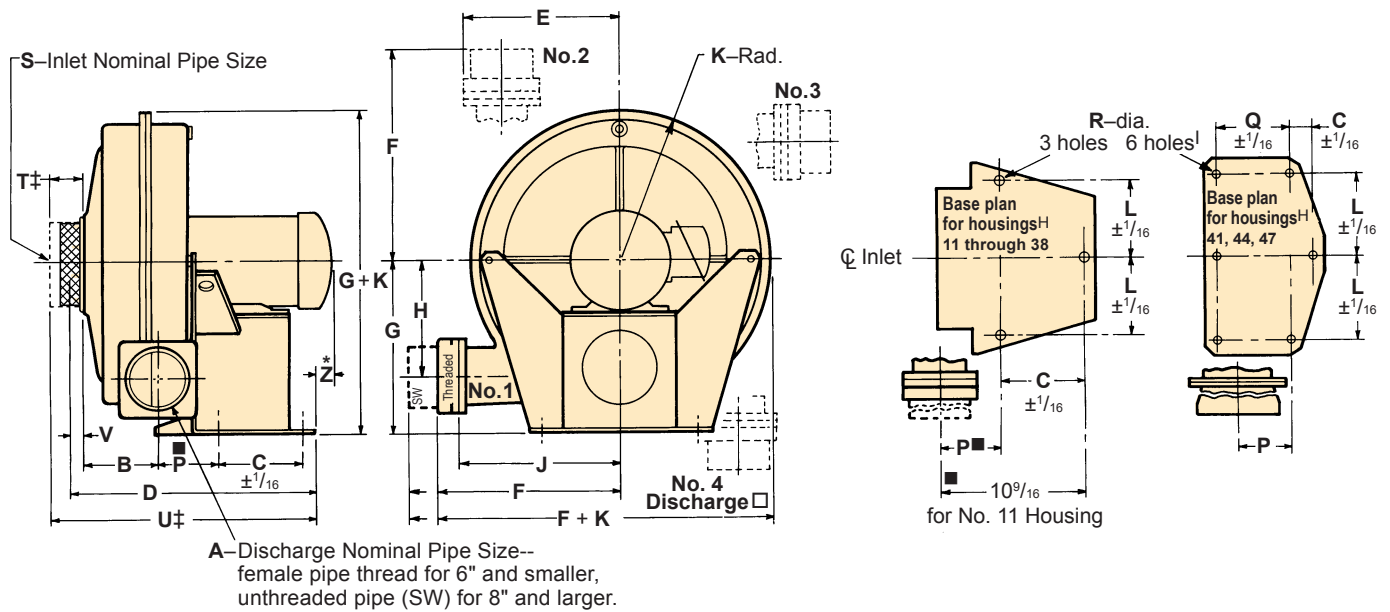
□ When #4 discharge position is specified, all blowers except those in discharge position group A, B, or C, require a modification of blower base (reference Bulletin 2300).



All dimensions are in inches. Dimensions shown apply only to blowers with T-frame motors.
Consult Fives North American for dimensions of blowers with other motor dimensions.

Blower Designation ★	A	B	C	D	E	F	G	H	J	K	L	P	Q	R	S	T±	U±	V	Z*	F+K	G+K
2310-11/4-T.5D	2S	4 ^{11/16}	10 ^{5/8}	16 ^{3/4}	7 ^{3/16}	9 ^{9/16} §	8 ^{3/4}	5 ^{9/16}	8 ^{1/2}	7	2 ^{3/8}	■	—	3/4	3	4	20	3/4	—	16 ^{9/16} §	15 ^{3/4}
2310-19/1-_.75D	3S	2 ^{13/16}	6 ^{1/4}	15	13 ^{1/2}	15 ^{9/16} §	15	10 ^{3/4}	14	13 ^{5/16}	6 ^{3/4}	4 ^{5/16}	—	3/4	3	4	18 ^{3/16}	1 ^{3/16}	—	28 ^{7/8} §	28 ^{5/16}
2310-19/1-1D	4S	2 ^{13/16}	6 ^{1/4}	15	13 ^{1/2}	15 ^{9/16} §	15	10 ^{3/4}	14	13 ^{5/16}	6 ^{3/4}	4 ^{5/16}	—	3/4	3	4	18 ^{3/16}	1 ^{3/16}	—	28 ^{7/8} §	28 ^{5/16}
2310-19/1-1.5D	6S	2 ^{13/16}	6 ^{1/4}	15	14 ^{1/2}	19 ^{3/8} §	15	10 ^{3/4}	14	13 ^{5/16}	6 ^{3/4}	4 ^{5/16}	—	3/4	4	4	18 ^{3/16}	1 ^{3/16}	—	32 ^{11/16} §	28 ^{5/16}
2310-19/1-2D	6S	2 ^{13/16}	6 ^{1/4}	15	14 ^{1/2}	19 ^{3/8} §	15	10 ^{3/4}	14	13 ^{5/16}	6 ^{3/4}	4 ^{5/16}	—	3/4	4	4	18 ^{3/16}	1 ^{3/16}	—	32 ^{11/16} §	28 ^{5/16}
2310-26/1-3D	6S	3 ^{7/8}	5 ^{1/4}	16 ^{9/16}	15 ^{5/8}	17 ^{13/16} §	16 ^{1/4}	11 ^{3/4}	16	14 ^{3/4}	7	5 ^{7/16}	—	3/4	6	4	19 ^{3/8}	1 ^{3/16}	—	32 ^{9/16} §	31
2310-26/1-5D	8†	3 ^{7/8}	5 ^{1/4}	16 ^{9/16}	15 ^{5/8}	22 ^{3/16} †	16 ^{1/4}	11 ^{3/4}	16	14 ^{3/4}	7	5 ^{7/16}	—	3/4	6	4	19 ^{3/8}	1 ^{3/16}	1	36 ^{15/16} †	31
2310-35/1-7.5D	10†	2 ^{3/4}	7 ^{3/4}	19 ^{3/4}	18 ^{3/4}	35 ^{3/8} †	20 ^{3/8}	13 ^{3/8}	23	18 ^{13/16}	8 ^{1/2}	6 ^{15/16}	—	3/4	8	4	22 ^{1/4}	1 ^{1/2}	1 ^{3/16}	54 ^{3/4} †	39 ^{3/16}
2310-21/1-10D	12†	3 ^{15/16}	5 ^{3/4}	21 ^{5/16}	20 ^{5/8}	38 ^{7/16} §	25 ^{1/2}	13 ^{7/8}	25	19 ^{3/4}	7 ^{1/4}	8 ^{9/16}	—	3/4	10	4	23 ^{1/16}	2 ^{1/4}	2 ^{3/8}	58 ^{3/16} †	45 ^{1/4}
2310-47/1-40D	20†	12 ^{3/8}	8	39 ^{3/16}	33 ^{1/2}	54 ^{7/16} †	35	20 ^{1/2}	38	31 ^{3/16}	26 ^{7/8}	13	22 ^{3/4}	1	24	—	—	4 ^{5/16}	9 ^{1/16}	85 ^{5/8} †	66 ^{3/16}
2310-47/1-50D	24†	12 ^{3/8}	8	39 ^{3/16}	33 ^{1/2}	54 ^{7/16} †	35	20 ^{1/2}	38	31 ^{3/16}	26 ^{7/8}	13	22 ^{3/4}	1	24	—	—	4 ^{5/16}	2	85 ^{5/8} †	66 ^{3/16}
2312-11/4-T.5D	2S	4 ^{11/16}	10 ^{5/8}	16 ^{3/4}	7 ^{3/16}	9 ^{9/16} §	8 ^{3/4}	5 ^{9/16}	8 ^{1/2}	7	2 ^{3/8}	■	—	3/4	3	4	20	3/4	—	16 ^{9/16} §	15 ^{3/4}
2312-19/1-1D	3S	2 ^{13/16}	6 ^{1/4}	15	13 ^{1/2}	15 ^{9/16} §	15	10 ^{3/4}	14	13 ^{5/16}	6 ^{3/4}	4 ^{5/16}	—	3/4	3	4	18 ^{3/16}	1 ^{3/16}	—	28 ^{7/8} §	28 ^{5/16}
2312-19/1-1.5D	4S	2 ^{13/16}	6 ^{1/4}	15	13 ^{1/2}	15 ^{9/16} §	15	10 ^{3/4}	14	13 ^{5/16}	6 ^{3/4}	4 ^{5/16}	—	3/4	4	4	18 ^{3/16}	1 ^{3/16}	—	28 ^{7/8} §	28 ^{5/16}
2312-19/1-2D	6S	2 ^{13/16}	6 ^{1/4}	15	13 ^{1/2}	19 ^{3/8} §	15	10 ^{3/4}	14	13 ^{5/16}	6 ^{3/4}	4 ^{5/16}	—	3/4	4	4	18 ^{3/16}	1 ^{3/16}	—	32 ^{11/16} §	28 ^{5/16}
2312-26/1-3D	6S	3 ^{7/8}	5 ^{1/4}	16 ^{9/16}	15 ^{5/8}	17 ^{13/16} §	16 ^{1/4}	11 ^{3/4}	16	14 ^{3/4}	7	5 ^{7/16}	—	3/4	6	4	19 ^{3/8}	1 ^{3/16}	—	32 ^{9/16} §	31
2312-26/1-5D	8†	3 ^{7/8}	5 ^{1/4}	16 ^{9/16}	15 ^{5/8}	22 ^{3/16} †	16 ^{1/4}	11 ^{3/4}	16	14 ^{3/4}	7	5 ^{7/16}	—	3/4	6	4	19 ^{3/8}	1 ^{3/16}	1	36 ^{15/16} †	31
2312-35/1-7.5D	8†	2 ^{3/4}	7 ^{3/4}	19 ^{3/4}	18 ^{3/4}	35 ^{3/8} †	20 ^{3/8}	13 ^{3/8}	23	18 ^{13/16}	8 ^{1/2}	6 ^{15/16}	—	3/4	8	4	22 ^{1/4}	1 ^{1/2}	1 ^{3/16}	54 ^{3/4} †	39 ^{3/16}
2312-35/1-10D	10†	2 ^{3/4}	7 ^{3/4}	19 ^{3/4}	18 ^{3/4}	35 ^{3/8} †	20 ^{3/8}	13 ^{3/8}	23	18 ^{13/16}	8 ^{1/2}	6 ^{15/16}	—	3/4	8	4	22 ^{1/4}	1 ^{1/2}	2 ^{1/4}	54 ^{3/4} †	39 ^{3/16}
2312-21/1-15dD	12†	3 ^{7/8}	5 ^{3/4}	22 ^{1/4}	20 ^{5/8}	38 ^{7/16} †	25 ^{1/2}	13 ^{7/8}	25	19 ^{3/4}	7 ^{1/4}	8 ^{9/16}	—	3/4	14	3 ^{3/4}	22 ^{3/4}	3 ^{1/4}	—	58 ^{3/16} †	45 ^{1/4}
2312-21/1-15dD	12†	3 ^{7/8}	9 ^{3/4}	26 ^{3/4}	20 ^{5/8}	38 ^{7/16} †	25 ^{1/2}	13 ^{7/8}	25	19 ^{3/4}	8 ^{1/2}	9 ^{1/16}	—	3/4	14	3 ^{3/4}	27 ^{1/4}	3 ^{1/4}	1/2	58 ^{3/16} †	45 ^{1/4}
2312-41/1-20D	16†	12 ^{15/16}	8	36 ^{7/8}	34 ^{1/4}	48 ^{15/16} †	38	25 ^{1/8}	37 ^{1/2}	33 ^{11/16}	29 ^{7/8}	11 ^{3/8}	19 ^{3/4}	1	16	3 ^{3/4}	36 ^{15/16}	3 ^{1/16}	—	82 ^{5/8} †	71 ^{11/16}
2312-41/1-25D	16†	12 ^{15/16}	8	36 ^{7/8}	34 ^{1/4}	48 ^{15/16} †	38	25 ^{1/8}	37 ^{1/2}	33 ^{11/16}	29 ^{7/8}	11 ^{3/8}	19 ^{3/4}	1	16	3 ^{3/4}	36 ^{15/16}	3 ^{1/16}	—	82 ^{5/8} †	71 ^{11/16}
2312-41/1-30D	16†	12 ^{15/16}	8	36 ^{7/8}	34 ^{1/4}	48 ^{15/16} †	38	25 ^{1/8}	37 ^{1/2}	33 ^{11/16}	29 ^{7/8}	11 ^{3/8}	19 ^{3/4}	1	16	3 ^{3/4}	36 ^{15/16}	3 ^{1/16}	5/8	82 ^{5/8} †	71 ^{11/16}
2312-47/1-40D	18†	12 ^{3/8}	8	39 ^{3/16}	33 ^{1/2}	54 ^{7/16} †	35	20 ^{1/2}	38	31 ^{3/16}	26 ^{7/8}	13	22 ^{3/4}	1	24	—	—	4 ^{5/16}	1/2	85 ^{5/8} †	66 ^{3/16}
2312-41/1-40D	18†	12 ^{15/16}	8	36 ^{7/8}	34 ^{1/4}	45 ^{13/16} †	38	25 ^{1/8}	37 ^{1/2}	33 ^{11/16}	29 ^{7/8}	11 ^{3/8}	19 ^{3/4}	1	16	3 ^{3/4}	36 ^{15/16}	3 ^{1/16}	1 ^{1/2}	79 ^{1/2} †	71 ^{11/16}
2312-47/1-50D	20†	12 ^{3/8}	8	39 ^{3/16}	33 ^{1/2}	54 ^{7/16} †	35	20 ^{1/2}	38	31 ^{3/16}	26 ^{7/8}	13	22 ^{3/4}	1	24	—	—	4 ^{5/16}	2	85 ^{5/8} †	66 ^{3/16}
2316-14/2-1D	3S	5 ^{3/8}	6	16 ^{5/8}	10 ^{3/8}	13 ^{1/16} §	12 ^{1/4}	8 ^{3/8}	11 ^{1/2}	10 ^{9/16}	5 ^{1/2}	3 ^{5/8}	—	3/4	3	4	19 ^{13/16}	1 ^{3/16}	—	23 ^{5/8} §	22 ^{13/16}
2316-14/2-1.5D	3S	5 ^{3/8}	6	16 ^{5/8}	10 ^{3/8}	13 ^{1/16} §	12 ^{1/4}	8 ^{3/8}	11 ^{1/2}	10 ^{9/16}	5 ^{1/2}	3 ^{5/8}	—	3/4	3	4	19 ^{13/16}	1 ^{3/16}	—	23 ^{5/8} §	22 ^{13/16}
2316-17/2-1.5D	4S	5 ^{15/16}	6	17 ^{9/16}	11	13 ^{1/16} §	12 ^{1/4}	8 ^{1/4}	11 ^{1/2}	10 ^{9/16}	5 ^{1/2}	4	—	3/4	4	4	20 ^{3/4}	1 ^{3/16}	—	23 ^{5/8} §	22 ^{13/16}
2316-17/2-2D	4S	5 ^{15/16}	6	17 ^{9/16}	11	13 ^{1/16} §	12 ^{1/4}	8 ^{1/4}	11 ^{1/2}	10 ^{9/16}	5 ^{1/2}	4	—	3/4	4	4	20 ^{3/4}	1 ^{3/16}	—	23 ^{5/8} §	22 ^{13/16}
2316-19/1-2D	4S	3 ^{1/4}	6 ^{1/4}	15 ^{7/16}	13 ^{1/2}	15 ^{9/16} §	15	10 ^{3/4}	14	13 ^{5/16}	6 ^{3/4}	4 ^{5/16}	—	3/4	4	4	18 ^{3/8}	1 ^{3/16}	—	28 ^{5/8} §	28 ^{5/16}
2316-19/1-3D	6S	3 ^{1/4}	6 ^{1/4}	15 ^{7/16}	14 ^{1/2}	19 ^{3/8} §	15	10 ^{3/4}	14	13 ^{5/16}	6 ^{3/4}	4 ^{5/16}	—	3/4	4	4	18 ^{3/8}	1 ^{3/16}	—	32 ^{11/16} §	28 ^{5/16}
2316-26/1-3D	6S	3 ^{7/8}	5 ^{1/4}	16 ^{9/16}	15 ^{5/8}	17 ^{13/16} §	16 ^{1/4}	11 ^{3/4}	16	14 ^{3/4}	7	5 ^{7/16}	—	3/4	6	4	19 ^{3/8}	1 ^{3/16}	—	32 ^{9/16} §	31
2316-17/2-3D	6S	5 ^{15/16}	6	17 ^{9/16}	11	16 ^{7/8} §	12 ^{1/4}	8 ^{1/4}	11 ^{1/2}	10 ^{9/16}	5 ^{1/2}	4	—	3/4	4	4	20 ^{3/4}	1 ^{3/16}	—	27 ^{7/16} §	22 ^{13/16}
2316-24/2-3D	6S	7 ^{3/8}	4 ^{7/8}	19 ^{1/2}	13 ^{1/8}	15 ^{5/16} §	13 ^{3/4}	9	13 ^{1/2}	12 ^{5/16}	6	5 ^{1/4}	—	3/4	6	4	22 ^{5/16}	1 ^{3/16}	1/8	27 ^{5/8} §	26 ^{1/16}
2316-28/1-5D	6S	3 ^{15/16}	7	19 ^{5/16}	17	21 ^{13/16} §	20 ^{1/4}	12 ^{7/8}	20	16 ^{5/16}	7 ^{1/4}	6 ^{3/16}	—	3/4	8	4	21 ^{5/16}	1 ^{3/8}	—	38 ^{1/8} §	36 ^{9/16}
2316-24/2-5D	6S	3 ^{7/8}	4 ^{7/8}	19 ^{1/2}	13 ^{1/8}	15 ^{5/16} §	13 ^{3/4}	9	13 ^{1/2}	12 ^{5/16}	6	5 ^{1/4}	—	3/4	6	4	22 ^{5/16}	1 ^{3/16}	—	27 ^{5/8} §	26 ^{1/16}
2316-26/1-5D	6S	3 ^{7/8}	5 ^{1/4}	16 ^{9/16}	15 ^{5/8}	17 ^{13/16} §	16 ^{1/4}	11 ^{3/4}	16	14 ^{3/4}	7	5 ^{7/16}	—	3/4	6	4	19 ^{3/8}	1 ^{3/16}	7/8	32 ^{9/16} §	31
2316-31/2-7.5dD	8†	7 ^{13/16}	5 ^{1/4}	22 ^{1/4}	15 ^{5/8}	30 ^{3/8} †	18 ^{1/4}	10 ^{1/4}	18	14 ^{7/8}	6 ^{3/8}	6 ^{7/8}	—	3/4	8	4	24 ^{1/4}	1 ^{1/2}	—	45 ^{1/4} †	33 ^{3/8}
2316-31/2-7.5dD	8†	7 ^{13/16}	7 ^{3/4}	24 ^{3/4}	15 ^{5/8}	30 ^{3/8} †	18 ^{1/4}	10 ^{1/4}	18	14 ^{7/8}	7	6 ^{7/8}	—	3/4	8	4	27 ^{1/4}	1 ^{1/2}	7/8	45 ^{1/4} †	33 ^{3/8}
2316-28/1-7.5D	6S	3 ^{15/16}	7	19 ^{5/16}	17	21 ^{13/16} §	20 ^{1/4}	12 ^{7/8}	20	16 ^{5/16}	7 ^{1/4}	6 ^{3/16}	—	3/4	8	4	21 ^{5/16}	1 ^{3/8}	1 ^{3/16}	38 ^{1/8} §	36 ^{9/16}
2316-26/1-7.5dD	8†	3 ^{7/8}	5 ^{1/4}	16 ^{9/16}	15 ^{5/8}	22 ^{13/16} †	16 ^{1/4}	11 ^{3/4}	16	14 ^{3/4}	7	5 ^{7/16}	—	3/4	6	4	19 ³				

Blower Designation*	Blower Designation*																				
	A	B	C	D	E	F	G	H	J	K	L	P	Q	R	S	T‡	U‡	V	Z*	F+K	G+K
2316-21/1-15D	10†	3 ⁷ / ₈	5 ³ / ₄	21 ¹ / ₄	20 ⁵ / ₈	38 ⁷ / ₁₆ †	25 ¹ / ₂	13 ⁷ / ₈	25	19 ³ / ₄	7 ¹ / ₄	8 ⁹ / ₁₆	—	3 ³ / ₄	10	4	23	2 ¹ / ₄	—	58 ³ / ₁₆ †	45 ¹ / ₄
2316-21/1-15D	10†	3 ⁷ / ₈	9 ³ / ₄	25 ³ / ₄	20 ⁵ / ₈	38 ⁷ / ₁₆ †	25 ¹ / ₂	13 ⁷ / ₈	25	19 ³ / ₄	8 ¹ / ₂	9 ¹ / ₁₆	—	3 ³ / ₄	10	4	27 ¹ / ₂	2 ¹ / ₄	1 ¹ / ₂	58 ³ / ₁₆ †	45 ¹ / ₄
2316-35/1-15D	10†	4 ¹ / ₁₆	7 ³ / ₄	21 ¹ / ₁₆	18 ³ / ₄	35 ⁷ / ₈ †	20 ³ / ₈	13 ³ / ₈	23	18 ¹³ / ₁₆	8 ¹ / ₂	6 ¹⁵ / ₁₆	—	3 ³ / ₄	8	4	23 ⁹ / ₁₆	1 ¹ / ₂	—	54 ³ / ₄ †	39 ³ / ₁₆
2316-35/1-15D	10†	4 ¹ / ₁₆	9	23 ⁹ / ₁₆	18 ³ / ₄	35 ⁷ / ₈ †	20 ³ / ₈	13 ³ / ₈	23	18 ¹³ / ₁₆	9 ¹ / ₂	8 ³ / ₁₆	—	3 ³ / ₄	8	4	26 ¹ / ₁₆	1 ¹ / ₂	2 ⁵ / ₁₆	54 ³ / ₄ †	39 ³ / ₁₆
2316-21/1-20D	10†	3 ⁷ / ₈	9 ³ / ₄	25 ³ / ₄	20 ⁵ / ₈	38 ⁷ / ₁₆ †	25 ¹ / ₂	13 ⁷ / ₈	25	19 ³ / ₄	8 ¹ / ₂	9 ¹ / ₁₆	—	3 ³ / ₄	10	4	27 ¹ / ₂	2 ¹ / ₄	2 ¹³ / ₁₆	58 ³ / ₁₆ †	45 ¹ / ₄
2316-41/1-20D	12†	12 ⁵ / ₁₆	8	36 ⁷ / ₈	34 ¹ / ₄	50 ¹⁵ / ₁₆ †	38	25 ¹ / ₈	37 ¹ / ₂	33 ¹¹ / ₁₆	29 ⁷ / ₈	11 ³ / ₈	19 ³ / ₄	1	16	3 ³ / ₄	36 ¹⁵ / ₁₆	3 ¹¹ / ₁₆	—	84 ⁵ / ₈ †	71 ¹¹ / ₁₆
2316-33/1-25D	12†	5 ⁷ / ₈	9 ¹ / ₂	30 ¹ / ₈	26 ⁷ / ₈	47 ¹⁵ / ₁₆ †	34 ¹ / ₂	17 ⁵ / ₈	34	25 ¹ / ₂	10	11 ³ / ₈	—	7 ⁸ / ₈	12	3 ³ / ₄	30 ⁵ / ₈	3 ¹ / ₄	2 ¹ / ₄	72 ¹⁵ / ₁₆ †	60
2316-41/1-25D	12†	12 ⁵ / ₁₆	8	36 ⁷ / ₈	34 ¹ / ₄	50 ¹⁵ / ₁₆ †	38	25 ¹ / ₈	37 ¹ / ₂	33 ¹¹ / ₁₆	29 ⁷ / ₈	11 ³ / ₈	19 ³ / ₄	1	16	3 ³ / ₄	36 ¹⁵ / ₁₆	3 ¹¹ / ₁₆	—	84 ⁵ / ₈ †	71 ¹¹ / ₁₆
2316-33/1-30D	14†	5 ⁷ / ₁₆	9 ¹ / ₂	30 ¹ / ₈	26 ⁷ / ₈	47 ¹⁵ / ₁₆ †	34 ¹ / ₂	17 ⁵ / ₈	34	25 ¹ / ₂	10	11 ³ / ₈	—	7 ⁸ / ₈	12	3 ³ / ₄	30 ⁵ / ₈	3 ¹ / ₄	3 ³ / ₄	72 ¹⁵ / ₁₆ †	60
2316-41/1-30D	16†	12 ⁵ / ₁₆	8	36 ⁷ / ₈	34 ¹ / ₄	48 ¹⁵ / ₁₆ †	38	25 ¹ / ₈	37 ¹ / ₂	33 ¹¹ / ₁₆	29 ⁷ / ₈	11 ³ / ₈	19 ³ / ₄	1	16	3 ³ / ₄	36 ¹⁵ / ₁₆	3 ¹¹ / ₁₆	5 ⁸ / ₈	82 ⁵ / ₈ †	71 ¹¹ / ₁₆
2316-41/1-40D	16†	12 ⁵ / ₁₆	8	36 ⁷ / ₈	34 ¹ / ₄	48 ¹⁵ / ₁₆ †	38	25 ¹ / ₈	37 ¹ / ₂	33 ¹¹ / ₁₆	29 ⁷ / ₈	11 ³ / ₈	19 ³ / ₄	1	16	3 ³ / ₄	36 ¹⁵ / ₁₆	3 ¹¹ / ₁₆	1 ¹ / ₂	82 ⁵ / ₈ †	71 ¹¹ / ₁₆
2316-41/1-50D	16†	12 ⁵ / ₁₆	8	36 ⁷ / ₈	34 ¹ / ₄	48 ¹⁵ / ₁₆ †	38	25 ¹ / ₈	37 ¹ / ₂	33 ¹¹ / ₁₆	29 ⁷ / ₈	11 ³ / ₈	19 ³ / ₄	1	16	3 ³ / ₄	36 ¹⁵ / ₁₆	3 ¹¹ / ₁₆	3	82 ⁵ / ₈ †	71 ¹¹ / ₁₆
2320-19/2-1.5D	3§	6 ⁷ / ₈	6 ¹ / ₄	19 ¹ / ₁₆	13 ¹ / ₂	15 ⁹ / ₁₆ §	15	10 ³ / ₄	14	13 ⁵ / ₁₆	6 ³ / ₄	4 ⁵ / ₁₆	—	3 ³ / ₄	3	4	22 ¹ / ₄	1 ³ / ₁₆	—	28 ⁷ / ₈ §	28 ⁵ / ₁₆
2320-19/2-2D	4§	6 ⁷ / ₈	6 ¹ / ₄	19 ¹ / ₁₆	13 ¹ / ₂	15 ⁹ / ₁₆ §	15	10 ³ / ₄	14	13 ⁵ / ₁₆	6 ³ / ₄	4 ⁵ / ₁₆	—	3 ³ / ₄	4	4	22 ¹ / ₄	1 ³ / ₁₆	—	28 ⁷ / ₈ §	28 ⁵ / ₁₆
2320-19/2-3D	4§	6 ⁷ / ₈	6 ¹ / ₄	19 ¹ / ₁₆	13 ¹ / ₂	15 ⁹ / ₁₆ §	15	10 ³ / ₄	14	13 ⁵ / ₁₆	6 ³ / ₄	4 ⁵ / ₁₆	—	3 ³ / ₄	4	4	22 ¹ / ₄	1 ³ / ₁₆	—	28 ⁷ / ₈ §	28 ⁵ / ₁₆
2320-26/2-5D	6§	7	5 ¹ / ₄	19 ¹ / ₁₆	15 ⁵ / ₈	17 ¹³ / ₁₆ §	16 ¹ / ₄	11 ³ / ₄	16	14 ³ / ₄	7	5 ⁷ / ₁₆	—	3 ³ / ₄	6	4	22 ¹ / ₂	1 ³ / ₁₆	—	32 ⁹ / ₁₆ §	31
2320-26/2-7.5D	6§	7	5 ¹ / ₄	19 ¹ / ₁₆	15 ⁵ / ₈	17 ¹³ / ₁₆ §	16 ¹ / ₄	11 ³ / ₄	16	14 ³ / ₄	7	5 ⁷ / ₁₆	—	3 ³ / ₄	6	4	22 ¹ / ₂	1 ³ / ₁₆	—	32 ⁹ / ₁₆ §	31
2320-26/2-7.5D	6§	7	5 ¹ / ₄	19 ¹ / ₁₆	15 ⁵ / ₈	17 ¹³ / ₁₆ §	16 ¹ / ₄	11 ³ / ₄	16	14 ³ / ₄	7	5 ⁷ / ₁₆	—	3 ³ / ₄	6	4	22 ¹ / ₂	1 ³ / ₁₆	2 ¹³ / ₁₆	32 ⁹ / ₁₆ §	31
2320-35/1-10D	8†	4 ¹ / ₁₆	7 ³ / ₄	21 ¹ / ₁₆	18 ³ / ₄	35 ⁷ / ₈ †	20 ³ / ₈	13 ³ / ₈	23	18 ¹³ / ₁₆	8 ¹ / ₂	6 ¹⁵ / ₁₆	—	3 ³ / ₄	8	4	23 ⁹ / ₁₆	1 ¹ / ₂	2 ¹ / ₄	54 ³ / ₄ †	39 ³ / ₁₆
2320-35/2-10D	8†	7 ³ / ₈	7 ³ / ₄	24 ³ / ₈	18 ³ / ₄	35 ⁷ / ₈ †	20 ³ / ₈	13 ³ / ₈	23	18 ¹³ / ₁₆	8 ¹ / ₂	6 ¹⁵ / ₁₆	—	3 ³ / ₄	8	4	26 ⁷ / ₈	1 ¹ / ₂	2 ¹ / ₄	54 ³ / ₄ †	39 ³ / ₁₆
2320-35/2-15D	8†	7 ³ / ₈	7 ³ / ₄	24 ³ / ₈	18 ³ / ₄	35 ⁷ / ₈ †	20 ³ / ₈	13 ³ / ₈	23	18 ¹³ / ₁₆	8 ¹ / ₂	6 ¹⁵ / ₁₆	—	3 ³ / ₄	8	4	26 ⁷ / ₈	1 ¹ / ₂	—	54 ³ / ₄ †	39 ³ / ₁₆
2320-35/2-15D	8†	7 ³ / ₈	9	26 ⁷ / ₈	18 ³ / ₄	35 ⁷ / ₈ †	20 ³ / ₈	13 ³ / ₈	23	18 ¹³ / ₁₆	9 ¹ / ₂	8 ³ / ₁₆	—	3 ³ / ₄	8	4	23 ⁹ / ₁₆	1 ¹ / ₂	2 ⁵ / ₁₆	54 ³ / ₄ †	39 ³ / ₁₆
2320-21/1-15D	8†	3 ⁷ / ₈	5 ³ / ₄	21 ¹ / ₄	20 ⁵ / ₈	38 ⁷ / ₁₆ †	25 ¹ / ₂	13 ⁷ / ₈	25	19 ³ / ₄	7 ¹ / ₄	8 ⁹ / ₁₆	—	3 ³ / ₄	10	4	23	2 ¹ / ₄	—	58 ³ / ₁₆ †	45 ¹ / ₄
2320-21/1-15D	8†	3 ⁷ / ₈	9 ³ / ₄	25 ³ / ₄	20 ⁵ / ₈	38 ⁷ / ₁₆ †	25 ¹ / ₂	13 ⁷ / ₈	25	19 ³ / ₄	8 ¹ / ₂	9 ¹ / ₁₆	—	3 ³ / ₄	10	4	27 ¹ / ₂	2 ¹ / ₄	1 ¹ / ₂	58 ³ / ₁₆ †	45 ¹ / ₄
2320-35/1-15D	8†	4 ¹ / ₁₆	7 ³ / ₄	21 ¹ / ₁₆	18 ³ / ₄	35 ⁷ / ₈ †	20 ³ / ₈	13 ³ / ₈	23	18 ¹³ / ₁₆	8 ¹ / ₂	6 ¹⁵ / ₁₆	—	3 ³ / ₄	8	4	23 ⁹ / ₁₆	1 ¹ / ₂	—	54 ³ / ₄ †	39 ³ / ₁₆
2320-35/1-15D	8†	4 ¹ / ₁₆	9	23 ⁹ / ₁₆	18 ³ / ₄	35 ⁷ / ₈ †	20 ³ / ₈	13 ³ / ₈	23	18 ¹³ / ₁₆	9 ¹ / ₂	8 ³ / ₁₆	—	3 ³ / ₄	8	4	26 ¹ / ₁₆	1 ¹ / ₂	2 ¹³ / ₁₆	54 ³ / ₄ †	39 ³ / ₁₆
2320-21/1-20D	10†	3 ⁷ / ₈	9 ³ / ₄	25 ³ / ₄	20 ⁵ / ₈	38 ⁷ / ₁₆ †	25 ¹ / ₂	13 ⁷ / ₈	25	19 ³ / ₄	8 ¹ / ₂	9 ¹ / ₁₆	—	3 ³ / ₄	10	4	27 ¹ / ₂	2 ¹ / ₄	2 ³ / ₁₆	58 ³ / ₁₆ †	45 ¹ / ₄
2320-41/1-25D	12†	12 ⁵ / ₁₆	8	36 ⁷ / ₈	34 ¹ / ₄	50 ¹⁵ / ₁₆ †	38	25 ¹ / ₈	37 ¹ / ₂	33 ¹¹ / ₁₆	29 ⁷ / ₈	11 ³ / ₈	19 ³ / ₄	1	16	3 ³ / ₄	36 ¹⁵ / ₁₆	3 ¹¹ / ₁₆	—	84 ⁵ / ₈ †	71 ¹¹ / ₁₆
2320-33/1-25D	12†	5 ⁷ / ₁₆	9 ¹ / ₂	30 ¹ / ₈	26 ⁷ / ₈	47 ¹⁵ / ₁₆ †	34 ¹ / ₂	17 ⁵ / ₈	34	25 ¹ / ₂	10	11 ³ / ₈	—	7 ⁸ / ₈	12	3 ³ / ₄	30 ⁵ / ₈	3 ¹ / ₄	2 ¹ / ₄	72 ¹⁵ / ₁₆ †	60
2320-33/1-30D	12†	5 ⁷ / ₁₆	9 ¹ / ₂	30 ¹ / ₈	26 ⁷ / ₈	47 ¹⁵ / ₁₆ †	34 ¹ / ₂	17 ⁵ / ₈	34	25 ¹ / ₂	10	11 ³ / ₈	—	7 ⁸ / ₈	12	3 ³ / ₄	30 ⁵ / ₈	3 ¹ / ₄	3 ³ / ₄	72 ¹⁵ / ₁₆ †	60
2320-41/1-30D	12†	12 ⁵ / ₁₆	8	36 ⁷ / ₈	34 ¹ / ₄	50 ¹⁵ / ₁₆ †	38	25 ¹ / ₈	37 ¹ / ₂	33 ¹¹ / ₁₆	29 ⁷ / ₈	11 ³ / ₈	19 ³ / ₄	1	16	3 ³ / ₄	36 ¹⁵ / ₁₆	3 ¹¹ / ₁₆	5 ⁸ / ₈	84 ⁵ / ₈ †	71 ¹¹ / ₁₆
2320-33/1-40D	14†	5 ⁷ / ₁₆	9 ¹ / ₂	30 ¹ / ₈	26 ⁷ / ₈	47 ¹⁵ / ₁₆ †	34 ¹ / ₂	17 ⁵ / ₈	34	25 ¹ / ₂	10	11 ³ / ₈	—	7 ⁸ / ₈	12	3 ³ / ₄	30 ⁵ / ₈	3 ¹ / ₄	2 ³ / ₄	72 ¹⁵ / ₁₆ †	60
2320-41/1-40D	16†	12 ⁵ / ₁₆	8	36 ⁷ / ₈	34 ¹ / ₄	50 ¹⁵ / ₁₆ †	38	25 ¹ /													



All dimensions are in inches. Dimensions shown apply only to blowers with T-frame motors. Consult Fives North American for dimensions of blowers with other motors.

Blower Designation*	A	B	C	D	E	F	G	H	J	K	L	P	Q	R	S	T [†]	U [‡]	V	Z*	F+K	G+K
2344-28/3—15 ^d D	6§	14 ³ / ₈	7	29 ⁷ / ₈	17	21 ¹³ / ₁₆ §	20 ¹ / ₄	12 ⁷ / ₈	20	16 ⁵ / ₁₆	7 ¹ / ₄	6 ³ / ₁₆	—	³ / ₄	8	4	32 ³ / ₈	1 ¹ / ₂	—	38 ¹ / ₈ §	36 ⁹ / ₁₆
2344-28/3—15 ^d D	6§	14 ³ / ₈	10 ³ / ₄	33 ⁵ / ₈	17	21 ¹³ / ₁₆ §	20 ¹ / ₄	12 ⁷ / ₈	20	16 ⁵ / ₁₆	8 ¹ / ₂	6 ³ / ₁₆	—	³ / ₄	8	4	36 ¹ / ₈	1 ¹ / ₂	1 ⁵ / ₁₆	38 ¹ / ₈ §	36 ⁹ / ₁₆
2344-28/3—20D	6§	14 ³ / ₈	10 ³ / ₄	33 ⁵ / ₈	17	21 ¹³ / ₁₆ §	20 ¹ / ₄	12 ⁷ / ₈	20	16 ⁵ / ₁₆	8 ¹ / ₂	6 ³ / ₁₆	—	³ / ₄	8	4	36 ¹ / ₈	1 ¹ / ₂	3	38 ¹ / ₈ §	36 ⁹ / ₁₆
2344-21/2—30D	8†	10 ¹⁵ / ₁₆	12 ¹ / ₂	36 ⁵ / ₁₆	20 ⁵ / ₈	38 ⁷ / ₁₆ †	25 ¹ / ₂	13 ⁷ / ₈	25	19 ³ / ₄	10 ¹ / ₂	9 ¹³ / ₁₆	—	³ / ₄	10	4	38 ¹ / ₁₆	2 ¹ / ₄	2	58 ³ / ₁₆ †	45 ¹ / ₄
2344-21/2—40 ^d D	8†	10 ¹⁵ / ₁₆	12 ¹ / ₂	36 ⁵ / ₁₆	20 ⁵ / ₈	38 ⁷ / ₁₆ †	25 ¹ / ₂	13 ⁷ / ₈	25	19 ³ / ₄	10 ¹ / ₂	9 ¹³ / ₁₆	—	³ / ₄	10	4	38 ¹ / ₁₆	2 ¹ / ₄	—	58 ³ / ₁₆ †	45 ¹ / ₄
2344-21/2—40 ^d D	8†	10 ¹⁵ / ₁₆	12 ¹ / ₂	36 ⁵ / ₁₆	20 ⁵ / ₈	38 ⁷ / ₁₆ †	25 ¹ / ₂	13 ⁷ / ₈	25	19 ³ / ₄	10 ¹ / ₂	9 ¹³ / ₁₆	—	³ / ₄	10	4	38 ¹ / ₁₆	2 ¹ / ₄	2 ⁷ / ₈	58 ³ / ₁₆ †	45 ¹ / ₄
2344-21/2—50D	8†	10 ¹⁵ / ₁₆	12 ¹ / ₂	36 ⁵ / ₁₆	20 ⁵ / ₈	38 ⁷ / ₁₆ †	25 ¹ / ₂	13 ⁷ / ₈	25	19 ³ / ₄	10 ¹ / ₂	9 ¹³ / ₁₆	—	³ / ₄	10	4	38 ¹ / ₁₆	2 ¹ / ₄	4 ³ / ₈	58 ³ / ₁₆ †	45 ¹ / ₄

★ Explanation of designation: 2304-11/1- _3D means Series 2300, 4 psi pressure, inner housing no. 11, 1 stage, 1/3 hp motor, direct drive.

^d With drip-proof motor, if dimensions are different from TEFC. ^t With TEFC motor, if dimensions are different from drip-proof.

* Z = Motor overhang for TEFC motors. There is no overhang for drip-proof motors, except 2320-33/1- 40D and 2324-33/1- 40D which overhang 1/2".

‡ Listed T and U dimensions are for SW inlet. For threaded inlet where S = 3", T = 1³/₄"; S = 4", T = 1⁷/₈"; S = 6", T = 5". If S is greater than 6", threaded inlet is not available.

† SW discharge (unthreaded pipe) is included in F. ■ Discharge C is 10⁹/₁₆" from farthest base hole, for inner housing no. 11.

§ Female pipe thread. If SW discharge (unthreaded pipe) is specified, add 3¹/₄" to F.

□ 5 holes when No. 4 discharge is furnished.

□ When #4 discharge position is specified, all blowers except those in discharge position group A, B, or C, require a modification of blower base (reference Bulletin 2300).



Fig. 1.



Fig. 2.

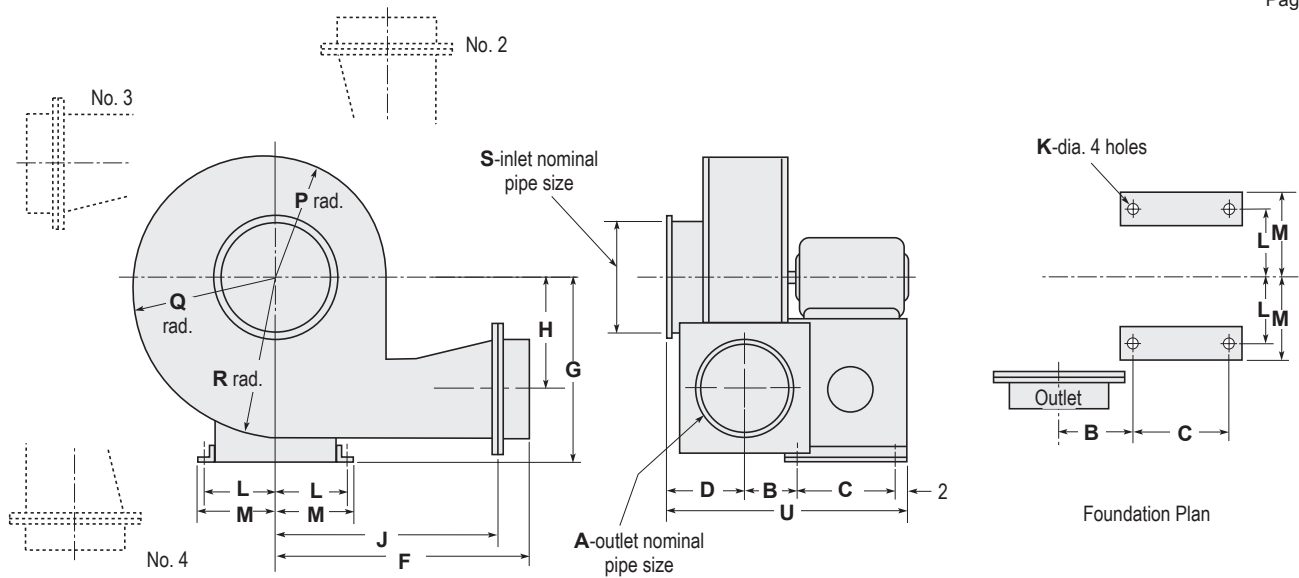


Fig. 3.

"SW" means sleeve or weld. A flexible rubberized sleeve (Bulletin 2947) can be slipped over an SW connection and clamped to prevent leaks. A flexible connection does not transmit vibrations or stresses as do welded or threaded connections. Blowlers are not designed for imposed loads from hard pipe connections and should not be "hard" piped except under unusual circumstances.

Discharge Connections: Blowlers have a flanged discharge per Sheet 2300-6. A threaded (female) flange (Fig. 1) is available with blowlers of 6" and smaller discharge pipe size. An SW connection (Fig. 2) is available for 8" and larger, or may be specified for smaller sizes (Fig. 3).

Inlet Connections: Blowlers have a flanged inlet per Sheet 2300-6. A perforated metal guard (Fig. 1) is the default choice. An SW inlet (unthreaded, Fig. 2) for sleeve or welding connection may be specified at an additional cost. A threaded female inlet (Fig. 3) may be specified for 3" through 6" inlet.



DIMENSIONS SHOWN ARE SUBJECT TO CHANGE. PLEASE OBTAIN CERTIFIED PRINTS FROM FIVES NORTH AMERICAN IF SPACE LIMITATIONS OR OTHER CONSIDERATIONS MAKE EXACT DIMENSION(S) CRITICAL.

All dimensions are in inches. Dimensions shown apply only to blowers with TS-frame motors.
Consult Fives North American for dimensions of blowers with other motors.

Blower number ★	A	B	C	D	F	G	H	J	K	L	M	P	Q	R	S	U
2310-39/1-T50D	24	9 ³ / ₄	19	11 ⁹ / ₁₆	39 ³ / ₄	35	13 ³ / ₁₆	35 ³ / ₄	3/4	10 ⁷ / ₁₆	11 ⁵ / ₁₆	17 ¹ / ₁₆	20 ⁵ / ₈	23 ³ / ₁₆	22	46 ¹ / ₁₆
2310-39/1-T60D	24	10 ¹ / ₈	20	11 ¹⁵ / ₁₆	38 ⁷ / ₈	35	13 ¹ / ₄	36 ¹ / ₈	3/4	11 ⁵ / ₁₆	12 ³ / ₁₆	18 ¹ / ₁₆	21 ¹ / ₈	23 ³ / ₁₆	24	47 ¹¹ / ₁₆
2310-39/1-T75D	24	10 ¹ / ₂	20	12 ⁵ / ₁₆	38 ³ / ₄	35	14 ⁵ / ₁₆	35 ⁷ / ₈	3/4	11 ⁵ / ₁₆	12 ³ / ₁₆	18 ⁷ / ₁₆	22 ¹ / ₈	24 ¹³ / ₁₆	24	49 ⁷ / ₁₆
2310-39/1-T100D	26	11 ¹ / ₂	22 ³ / ₈	12 ¹³ / ₁₆	39 ¹ / ₂	35	14 ¹⁵ / ₁₆	36	3/4	12 ⁷ / ₈	14	20 ¹ / ₈	23 ⁷ / ₁₆	26 ⁷ / ₁₆	26	53 ¹ / ₁₆
2310-39/1-T125D	30	11 ¹ / ₂	26	13 ³ / ₁₆	41 ¹ / ₂	35	15 ¹ / ₂	36 ¹ / ₄	3/4	13 ³ / ₈	15	20 ⁷ / ₈	24 ⁷ / ₁₆	27 ¹ / ₂	26	56 ¹¹ / ₁₆
2312-34/1-T20D	16	5	16 ¹ / ₈	6 ¹¹ / ₁₆	32 ³ / ₄	35	11 ¹⁵ / ₁₆	30	3/4	8 ³ / ₄	9 ⁵ / ₈	14 ¹ / ₂	16 ³ / ₄	18 ⁵ / ₁₆	14	29 ⁹ / ₁₆
2312-34/1-T25D	16	5 ¹ / ₄	18 ¹ / ₈	7 ¹ / ₁₆	32 ³ / ₄	35	11 ¹⁵ / ₁₆	30	3/4	9 ⁹ / ₁₆	10 ⁷ / ₁₆	14 ¹ / ₂	16 ³ / ₄	18 ⁵ / ₁₆	14	33 ⁵ / ₈
2312-34/1-T30D	20	6 ⁵ / ₈	18 ¹ / ₈	8 ⁷ / ₁₆	33 ³ / ₄	35	15 ⁵ / ₁₆	30 ¹ / ₂	3/4	9 ⁹ / ₁₆	10 ⁷ / ₁₆	16 ⁹ / ₁₆	20 ³ / ₁₆	23 ³ / ₁₆	16	37 ⁷ / ₈
2312-34/1-T40D	20	7 ¹ / ₈	19	8 ¹⁵ / ₁₆	33 ³ / ₄	35	14 ¹³ / ₁₆	30 ¹ / ₂	3/4	10 ⁷ / ₁₆	11 ⁵ / ₁₆	16 ⁹ / ₁₆	20 ³ / ₁₆	23 ³ / ₁₆	16	39 ⁵ / ₁₆
2312-37/1-T50D	22	7 ⁵ / ₁₆	19	9 ¹ / ₈	38 ³ / ₄	35	15 ⁷ / ₁₆	35 ¹ / ₂	3/4	10 ⁷ / ₁₆	11 ⁵ / ₁₆	17 ³ / ₈	21 ³ / ₁₆	24 ¹³ / ₁₆	18	41 ³ / ₁₆
2312-37/1-T60D	24	7 ⁹ / ₁₆	20	9 ³ / ₈	39 ¹ / ₈	35	16 ¹ / ₁₆	35 ² / ₂	3/4	11 ⁵ / ₁₆	12 ³ / ₁₆	17 ³ / ₈	21 ¹ / ₁₆	25 ⁹ / ₁₆	18	42 ⁹ / ₁₆
2312-37/1-T75D	24	7 ¹⁵ / ₁₆	20	9 ³ / ₄	38 ⁷ / ₈	35	16 ¹¹ / ₁₆	35 ⁷ / ₈	3/4	11 ⁵ / ₁₆	12 ³ / ₁₆	18 ⁹ / ₁₆	22 ⁵ / ₈	26 ¹ / ₁₆	18	44 ⁵ / ₁₆
2316-37/1-T40D	18	5 ¹ / ₂	19	7 ⁵ / ₁₆	38 ¹ / ₄	35	13 ⁹ / ₁₆	35 ¹ / ₄	3/4	10 ⁷ / ₁₆	11 ⁵ / ₁₆	16 ⁷ / ₁₆	19	21 ⁹ / ₁₆	16	36 ¹ / ₈
2316-37/1-T50D	18	5 ¹³ / ₁₆	19	7 ⁵ / ₈	38	35	13 ⁹ / ₁₆	35 ¹ / ₄	3/4	10 ⁷ / ₁₆	11 ⁵ / ₁₆	16 ⁷ / ₁₆	19	21 ⁹ / ₁₆	16	38 ¹ / ₁₆
2316-37/1-T60D	24	7 ¹ / ₂	20	9 ⁵ / ₁₆	39 ³ / ₄	35	16 ¹¹ / ₁₆	35 ³ / ₄	3/4	11 ⁵ / ₁₆	12 ³ / ₁₆	18 ⁹ / ₁₆	22 ⁵ / ₈	26 ¹ / ₁₆	18	42 ¹ / ₁₆
2316-37/1-T75D	24	8	20 ¹ / ₂	9 ¹³ / ₁₆	38 ⁵ / ₈	35	16 ³ / ₁₆	35 ⁷ / ₈	3/4	11 ⁵ / ₁₆	12 ³ / ₁₆	18 ⁹ / ₁₆	22 ⁵ / ₈	26 ¹ / ₁₆	18	44 ⁷ / ₁₆
2316-37/1-T100D	24	8 ¹ / ₄	22 ³ / ₈	10 ¹ / ₁₆	38 ¹ / ₈	35	17 ³ / ₁₆	35 ⁵ / ₈	3/4	12 ⁷ / ₈	14	19 ⁵ / ₁₆	23 ⁵ / ₈	27 ¹ / ₁₆	20	47 ⁹ / ₁₆
2320-37/1-T60D	20	6 ¹ / ₈	20	7 ¹⁵ / ₁₆	38 ⁷ / ₈	35	15 ¹ / ₈	35 ⁵ / ₈	3/4	11 ⁵ / ₁₆	12 ³ / ₁₆	18	20 ¹³ / ₁₆	23 ⁵ / ₈	18	33 ¹¹ / ₁₆
2320-37/1-T75D	20	6 ¹ / ₁₆	20	7 ⁷ / ₁₆	38 ¹ / ₂	35	15 ³ / ₁₆	35 ² / ₂	3/4	11 ⁵ / ₁₆	12 ³ / ₁₆	18 ³ / ₈	21 ¹ / ₄	24 ³ / ₈	18	40 ⁹ / ₁₆
2320-37/1-T100D	22	6 ¹ / ₂	22 ³ / ₈	8 ³ / ₁₆	39 ¹ / ₂	35	15 ¹¹ / ₁₆	35 ³ / ₄	3/4	12 ⁷ / ₈	14	18 ¹³ / ₁₆	21 ³ / ₄	24 ¹ / ₁₆	18	43 ¹³ / ₁₆
2320-37/1-T125D	26	8 ³ / ₁₆	26	10 ¹ / ₄	39 ³ / ₄	35	19 ¹ / ₁₆	36	3/4	13 ³ / ₈	15	20 ¹⁵ / ₁₆	25 ⁹ / ₁₆	30 ³ / ₁₆	20	50 ¹³ / ₁₆
2320-37/1-T150D	26	8 ⁷ / ₁₆	26	10 ⁹ / ₁₆	39 ¹ / ₈	35	19 ¹ / ₄	35 ⁷ / ₈	3/4	13 ⁷ / ₈	15	21 ⁵ / ₁₆	26	30 ³ / ₁₆	22	53 ⁷ / ₁₆
2320-39/1-T200D	30	9 ³ / ₈	26	11 ¹ / ₁₆	41	35	20	36 ¹ / ₈	3/4	13 ³ / ₈	15	22 ¹ / ₂	27 ¹ / ₂	32 ¹ / ₂	22	48 ¹³ / ₁₆
2320-39/1-T250D	30	12 ⁷ / ₈	26	14 ⁹ / ₁₆	40 ¹ / ₂	35	17 ³ / ₄	37	3/4	13 ⁷ / ₈	15	23 ³ / ₄	27 ¹ / ₁₆	31 ¹ / ₁₆	30	57 ¹³ / ₁₆
2324-37/1-T75D	20	5 ¹ / ₄	20	7 ¹ / ₁₆	39	35	13 ³ / ₈	35 ¹ / ₂	3/4	11 ⁵ / ₁₆	12 ³ / ₁₆	18 ¹ / ₄	20 ⁵ / ₁₆	21 ⁷ / ₈	16	38 ¹⁵ / ₁₆
2324-37/1-T100D	24	6 ¹¹ / ₁₆	22 ³ / ₈	8 ³ / ₈	39 ³ / ₄	35	16 ¹ / ₄	35 ¹ / ₂	3/4	12 ⁷ / ₈	14	19 ⁹ / ₁₆	22 ⁵ / ₈	25 ³ / ₄	18	44 ³ / ₁₆
2324-37/1-T125D	24	6 ³ / ₄	26	8 ⁷ / ₁₆	40 ¹ / ₈	35	16 ¹³ / ₁₆	35 ⁷ / ₈	3/4	13 ³ / ₈	15	19 ¹⁵ / ₁₆	23 ¹ / ₈	26 ⁹ / ₁₆	18	47 ³ / ₁₆
2324-37/1-T150D	24	8	26	9 ¹¹ / ₁₆	38 ³ / ₄	35	15 ⁷ / ₈	36 ¹ / ₄	3/4	13 ⁷ / ₈	15	20 ¹ / ₁₆	23 ³ / ₈	26 ³ / ₈	22	51 ¹¹ / ₁₆
2332-37/1-T75D	20	4 ¹³ / ₁₆	20 ¹ / ₂	6 ⁹ / ₁₆	38 ¹ / ₈	35	16 ¹ / ₁₆	35 ¹ / ₈	3/4	11 ⁵ / ₁₆	12 ³ / ₁₆	20 ³ / ₁₆	22 ⁷ / ₁₆	24 ¹ / ₁₆	16	38
2332-37/1-T100D	24	6 ³ / ₁₆	22 ³ / ₈	7 ¹³ / ₁₆	40 ³ / ₈	35	14 ⁹ / ₁₆	36 ¹ / ₈	3/4	12 ⁷ / ₈	14	20 ³ / ₁₆	22 ⁷ / ₁₆	24 ¹ / ₁₆	16	43 ⁷ / ₈
2332-37/1-T125D	24	6 ⁷ / ₁₆	26	8 ¹ / ₁₆	40 ¹ / ₂	35	14 ¹ / ₂	36 ¹ / ₂	3/4	13 ³ / ₈	15	20 ⁹ / ₁₆	22 ¹³ / ₁₆	24 ¹ / ₂	16	46 ¹ / ₂
2332-37/1-T150D	24	6 ¹³ / ₁₆	26	8 ⁷ / ₁₆	40 ¹ / ₂	35	14 ⁷ / ₁₆	37 ³ / ₄	3/4	13 ⁷ / ₈	15	20 ⁷ / ₈	23 ³ / ₁₆	24 ⁵ / ₁₆	18	49 ¹ / ₄

★ Explanation of designation: 2312-34/1-T40D means Series 2300, 12 psi pressure, inner housing no. 34, 1 stage, 40 hp motor, direct drive.

WARNING: Situations dangerous to personnel and property may exist with the operation and maintenance of any combustion equipment. The presence of fuels, oxidants, hot and cold combustion products, hot surfaces, electrical power in control and ignition circuits, etc., are inherent with any combustion application. Parts of this product may exceed 160F in operation and present a contact hazard. Fives North American urges compliance with National Safety Standards and insurance Underwriters recommendations, and care in operation.