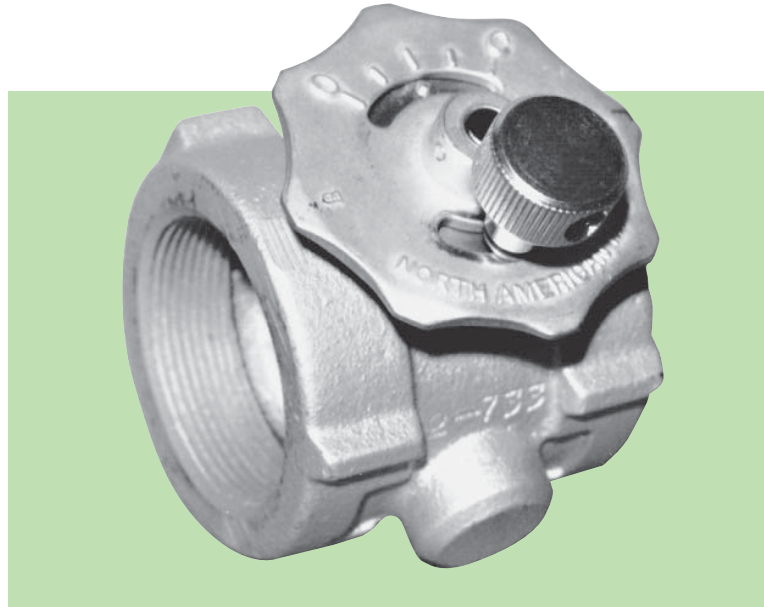


Butterfly valves control and balance flow rates. They are not for tight shutoff.



1122 Butterfly Valves feature a knurled knob locking device that prevents accidental shifting of valve setting. It is easily released, then relocked, if a new setting is desired. To discourage unauthorized tampering with the valve setting, the knob can be replaced with a socket head screw as the locking device. The socket head screw is conveniently supplied in the side of the knob.

Valves can be used on gas as well as air. The locking device makes them advantageous as limiting orifice valves, often preferable to fixed orifices, which are difficult to select in advance or change in the field.

Beveled discs minimize leakage through the valve in the closed position. Maximum pressure is 15 psig, maximum temperature 400 F. For fluid temperatures up to 700 F* an 1122- -H "Hi-Temp." model is available.

Selection: In most cases, an 1122 Valve should be the same pipe size as the burner connection it serves and/or other items in the line. If valve capacity is critical, reducing fittings could create enough additional pressure drop to cause a problem.

Construction: Valve bodies are sturdy, thick-walled iron castings, short in length to facilitate piping. Threads or flanges are carefully machined to provide accurate alignment of valve throat with the piping.†

The 3", 4", and 6" valves are offered with either threaded or flanged connections. Flanged valves match ANSI 125 psi and are designated 1122- -F. **Use flat face companion flanges and full face gaskets when installing this equipment. Raised face flanges may damage the valve body.**

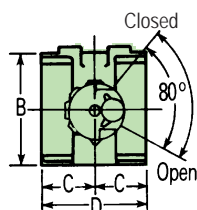
1122 Valves are designed to replace all versions of North American 1123, 1125, and 1127 Valves through 6" pipe size.

* 1122- -H has Grafoil packing seals.

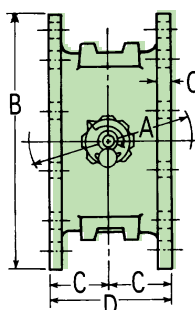
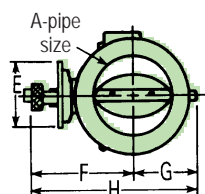
† Shaft seals are "U" cup design, Viton material.

CAUTION: Use an approved plug, needle, or other valve or cock for shutoff. 1122 Butterfly Valves are not intended nor designed for this function.

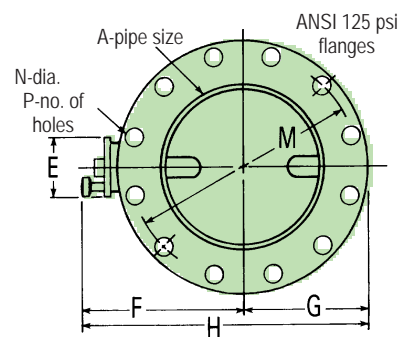
Valve designation	pipe size	valve type	shaft*	disc	scfh air wide open capacity at 1"wc pressure drop	scfh gas 0.6 sp gr capacity at 1"wc pressure drop	maximum pressure, psi
1122-0	3/4"	threaded	303 SST	CRS	500	645	25
1122-1	1"	threaded	303 SST	CRS	940	1 215	25
1122-2	1 1/4"	threaded	303 SST	CRS	1 900	2 450	25
1122-3	1 1/2"	threaded	303 SST	CRS	2 800	3 615	25
1122-4	2"	threaded	303 SST	CRS	5 320	6 870	25
1122-5	2 1/2"	threaded	303 SST	CRS	8 350	10 780	15
1122-6	3"	threaded	303 SST	CRS	14 500	18 720	15
1122-7	4"	threaded	303 SST	CRS	29 100	37 570	15
1122-8	6"	threaded	303 SST	CRS	78 100	100 830	15
1122-6-F	3"	flanged	303 SST	CRS	14 500	18 720	15
1122-7-F	4"	flanged	303 SST	CRS	29 100	37 570	15
1122-8-F	6"	flanged	303 SST	CRS	78 100	100 830	15



1122



1122- -F



Valve designation	dimensions in inches												wt, lb
	A	B	C	D	E	F	G	H	M	N	P	Q	
1122-0	3/4	2 1/16	1 3/16	2 3/8	3	2 3/4	1 3/16	3 15/16	—	—	—	—	2
1122-1	1	2 1/16	1 3/16	2 3/8	3	2 3/4	1 3/16	3 15/16	—	—	—	—	2
1122-2	1 1/4	2 5/16	1 1/4	2 1/2	3	2 13/16	1 5/16	4 1/8	—	—	—	—	2 1/4
1122-3	1 1/2	2 9/16	1 5/16	2 5/8	3	2 15/16	1 7/16	4 3/8	—	—	—	—	2 1/2
1122-4	2	3 3/16	1 1/2	3	3	3 1/4	1 3/4	5	—	—	—	—	3 1/2
1122-5	2 1/2	3 13/16	1 3/4	3 1/2	3	3 7/16	2 1/8	5 11/16	—	—	—	—	5 1/2
1122-6	3	4 1/2	1 15/16	3 7/8	3	4 1/8	2 7/16	6 7/16	—	—	—	—	8
1122-7	4	5 5/8	2 1/4	4 1/2	3	4 3/8	3	7 11/16	—	—	—	—	12 1/2
1122-8	6	7 7/8	2 9/16	5 1/8	3	5 13/16	4 1/8	9 15/16	—	—	—	—	24
1122-6-F	3	7 1/2	2	4	3	5 7/16	3 3/4	9 3/16	6	3/4	4	1/2	17
1122-7-F	4	9	2 1/4	4 1/2	3	6 3/16	4 1/2	10 11/16	7 1/2	3/4	8	9/16	21
1122-8-F	6	11	2 1/2	5	3	7 3/16	5 1/2	12 11/16	9 1/2	7/8	8	9/16	31

DIMENSIONS SHOWN ARE SUBJECT TO CHANGE. PLEASE OBTAIN CERTIFIED PRINTS FROM FIVES NORTH AMERICAN COMBUSTION, INC. IF SPACE LIMITATIONS OR OTHER CONSIDERATIONS MAKE EXACT DIMENSION(S) CRITICAL.

WARNING: Situations dangerous to personnel and property may exist with the operation and maintenance of an combustion equipment. The presence of fuels, oxidants, hot and cold combustion products, hot surfaces, electrical power in control and ignition circuits, etc., are inherent with any combustion application. Parts of this product may exceed 160F in operation and present a contact hazard. Fives North American urges compliance with National Safety Standards and insurance Underwriters recommendations, and care in operation.

Fives North American Combustion, Inc., 4455 East 71st Street, Cleveland, OH 44105 USA, Phone 216.271.6000
Fax 216.641.7852 email: fna.sales@fvesgroup.com • www.fvesgroup.com/fvesna