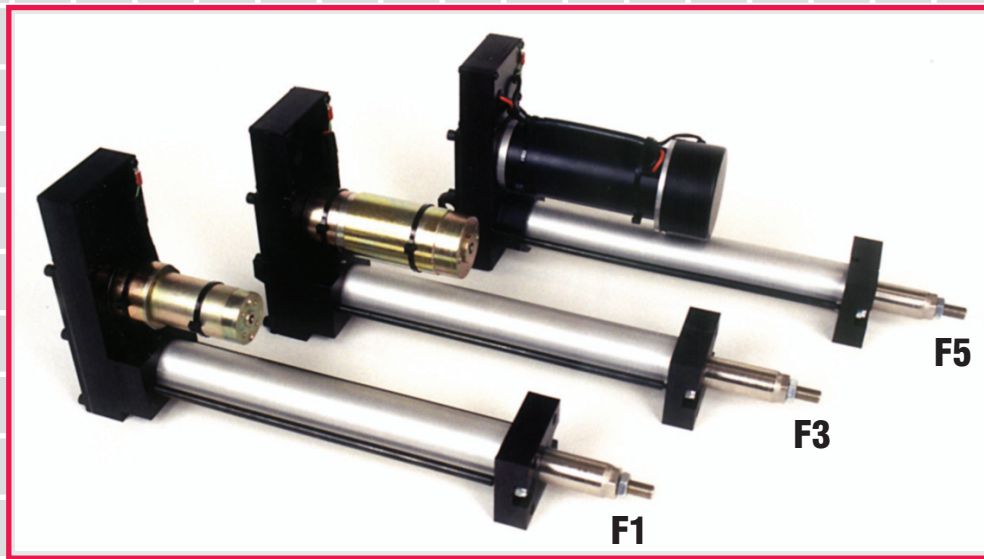


SimPlex™ H5530F Series Actuators

for Electro-Mechanical Guiding Systems



- Smooth linear ball screw actuation
- Compact, low profile units
- Reliable, maintenance-free operation
- Clean oil-free operation
- 150 lb, 300 lb, and 500 lb thrust rated models (see Specifications)
- Optional adjustable servo center
- Low backlash for optimum performance
- Universal design configured for flange or in-line mounting

The H5530F series is the newest addition to the SimPlex line of electro-mechanical actuators. Three thrust capacities are available, 150 lb, 300 lb, and 500 lb. The 150 lb, F1 actuator is bolt interchangeable with, and replaces the predecessor H5530D and H5530E actuators.

The H5530F family of actuators are available with the H3184 servo center. The H3184 servo center sensor mounts directly to the actuator and is adjustable through most of the usable stroke.

The F series was designed to prevent backdriving up to the rated capacity of the actuator. F1 (150 lb thrust) and F3 (300 lb thrust) are driven by SimPlex H6416 and H6421 controllers. The more powerful F5 (500 lb thrust) is driven by the H6425 controller or H6340 drive.

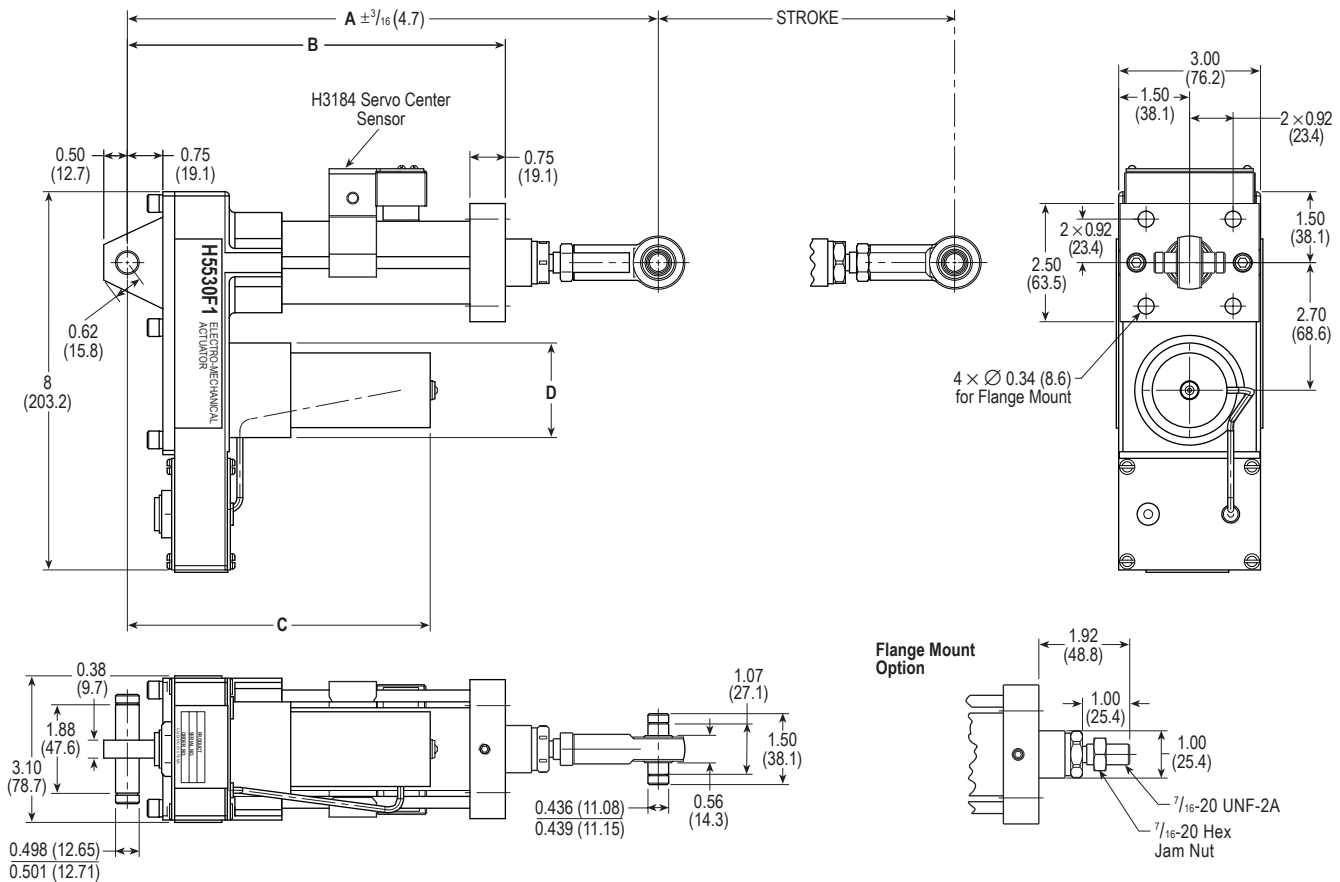
H5530F Actuator

3" and 5" Stroke Version

DIMENSIONS in inches (mm)

H3184 Servo Center Notes: (Optional)

1. The H3184 Sensor mounts to the side opposite the motor.
2. Position the H3184 Sensor along the length of the actuator as required to obtain desired centering position.
3. The H3184 Sensor cable is wired into the integral wiring compartment.
4. A 1.5" (38.1) clearance from steel framework is required for normal operation of the H3184 Sensor.



Part Number	A	B	C	D	Stroke
H5530F1-0300	11.23 (285.2)	8.00 (203.2)	6.41 (162.8)	2.00 (50.8)	3 (76.2)
H5530F1-0500	13.23 (336.0)	10.00 (254.0)	6.41 (162.8)	2.00 (50.8)	5 (127)
H5530F3-0300	11.23 (285.2)	8.00 (203.2)	7.54 (191.5)	2.12 (53.8)	3 (76.2)
H5530F3-0500	13.23 (336.0)	10.00 (254.0)	7.54 (191.5)	2.12 (53.8)	5 (127)

NOTES (for all strokes):

1. Attachment to actuated device must provide anti-rotation torque.
2. For flange mount option, remove rod eye. Reference flange mount option view for mounting.
3. Non-standard strokes can be accommodated with internal stroke limiters. The limiter is installed such that it prevents the actuator from extending completely.
4. $\pm \frac{3}{16}$ " (4.7 mm) adjustment available at rod end.
5. Consult Fives North American, Cleveland, OH for longer strokes.

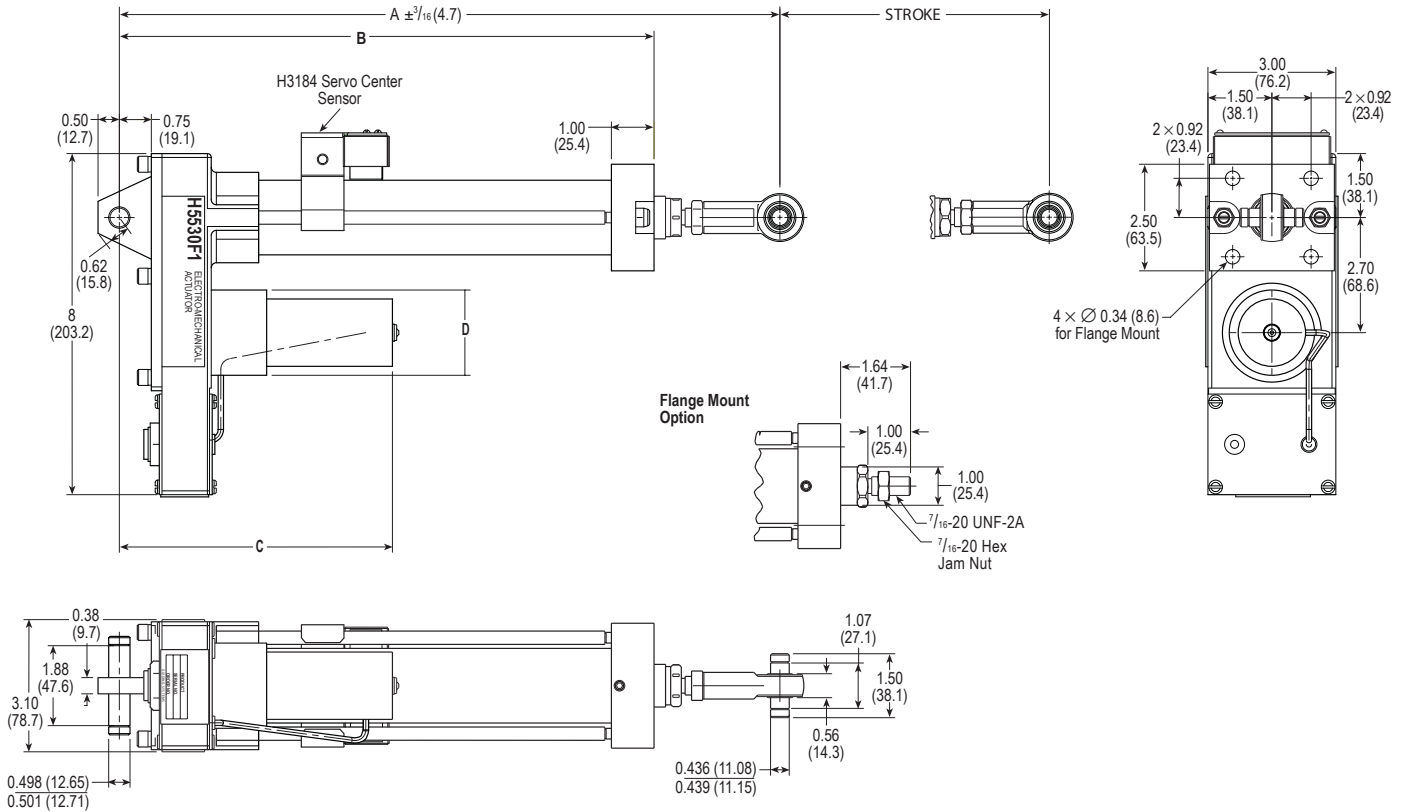
H5530F Actuator

6", 9" and 12" Stroke Version

DIMENSIONS in inches (mm)

H3184 Servo Center Notes: (Optional)

1. The H3184 Sensor mounts to the side opposite the motor.
2. Position the H3184 Sensor along the length of the actuator as required to obtain desired centering position.
3. The H3184 Sensor cable is wired into the integral wiring compartment.
4. A 1.5" (38.1) clearance from steel framework is required for normal operation of the H3184 Sensor.



Part Number	A	B	C	D	Stroke
H5530F1-0600	15.49 (393.4)	12.54 (318.5)	6.41 (162.8)	1.58 (40.1)	6 (152)
H5530F1-0900	18.49 (469.6)	15.54 (394.7)	6.41 (162.8)	1.58 (40.1)	9 (228)
H5530F1-1200	21.49 (545.8)	18.54 (470.9)	6.41 (162.8)	1.58 (40.1)	12 (305)
H5530F3-0600	15.49 (393.4)	12.54 (318.5)	7.54 (191.5)	2.12 (53.8)	6 (152)
H5530F3-0900	18.49 (469.6)	15.54 (394.7)	7.54 (191.5)	2.12 (53.8)	9 (228)
H5530F3-1200	21.49 (545.8)	18.54 (470.9)	7.54 (191.5)	2.12 (53.8)	12 (305)
H5530F5-0600	15.49 (393.4)	12.54 (318.5)	9.81 (249.2)	3.24 (82.3)	6 (152)
H5530F5-0900	18.49 (469.6)	15.54 (394.7)	9.81 (249.2)	3.24 (82.3)	9 (228)
H5530F5-1200	21.49 (545.8)	18.54 (470.9)	9.81 (249.2)	3.24 (82.3)	12 (305)

SPECIFICATIONS

Model	Thrust*	Speed†	Standard Stroke
H5530F1	150 lb (68 kg)	1.00 in./sec. (25 mm/sec.)	3" (76 mm), 5" (127 mm), 9" (228 mm), 12" (305 mm)
H5530F3	300 lb (136 kg)	0.70 in./sec. (17 mm/sec.)	6" (152 mm), 9" (228 mm), 12" (305 mm)
H5530F5	500 lb (227 kg)	1.25 in./sec. (32 mm/sec.)	6" (152 mm), 9" (228 mm), 12" (305 mm)

* Thrust available for application.

† Speed at full thrust.

Power: F1 and F3 Supplied by H6416 or H6421 controller
F5 Supplied by H6425 controller or H6340 drive

Side Load Capability:

25 lb (Note: The actuator is intended for axial loading only.)

Backdrive Force:

Each actuator model will hold rated thrust from table above.
F5 comes standard with a brake (energized for "release").
F1 and F3 do not use a brake.

Operating Temperature: 32-120 F (0-50 C)

Mounting: Actuator includes pins as shown. For clevis brackets, order separately as follows:

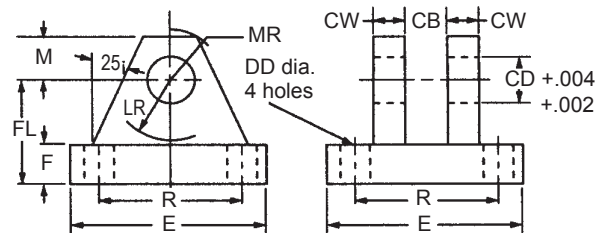
H5530-401 for 7/16" dia. pin
H0184-38-080 for 1/2" dia. pin

Electrical Cables: (Order Separately)

F1 and F3 H6415-5530F-07 7' cable
H6415-5530F-15 15' cable
H6415-ACTEXT-15 15' extension cable
F5 H6425-5530F-07 7' cable
H6425-5530F-15 15' cable
H6425-ACTEXT-15 15' extension cable

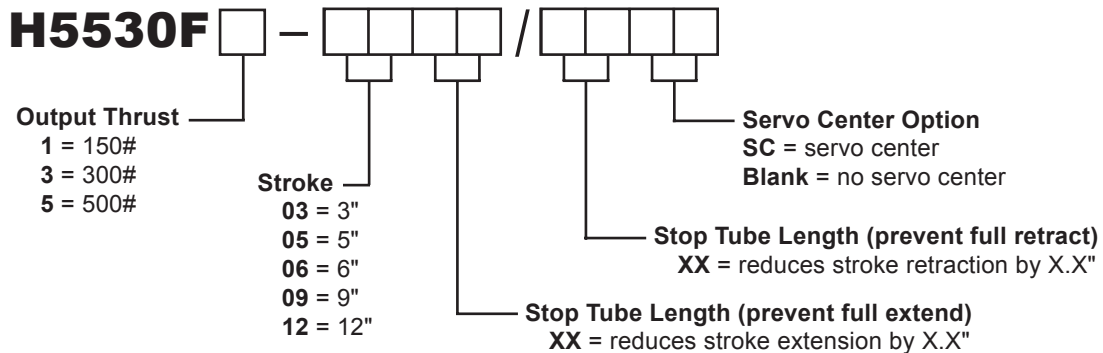
Weight: 12-20 lb

Clevis Bracket



	H5530-401	H0184-38-080
CB	.624 (15.8)	3/4 (19.1)
CD	7/16 (11.1)	1/2 (12.7)
CW	3/8 (9.5)	1/2 (12.7)
DD	.30 (7.6)	13/32 (10.3)
E	2 1/4 (57.2)	3 1/2 (88.9)
F	3/8 (9.5)	1/2 (12.7)
FL	1 (25.4)	1 1/2 (38.1)
LR	5/8 (15.9)	3/4 (19.1)
M	3/8 (9.5)	1/2 (12.7)
MR	1/2 (12.7)	5/8 (15.9)
R	1.75 (44.5)	2.55 (64.8)
Load Capacity lb. ⇐	3600	7300

MODEL No. CODING



Fives North American Combustion, Inc. Guiding Systems

4455 EAST 71st STREET, CLEVELAND, OH 44105 USA
Tel: 216.271.6000 Fax: 216.641.7852

email: fna.guiding@fivesgroup.com • www.fivesgroup.com/fivesna